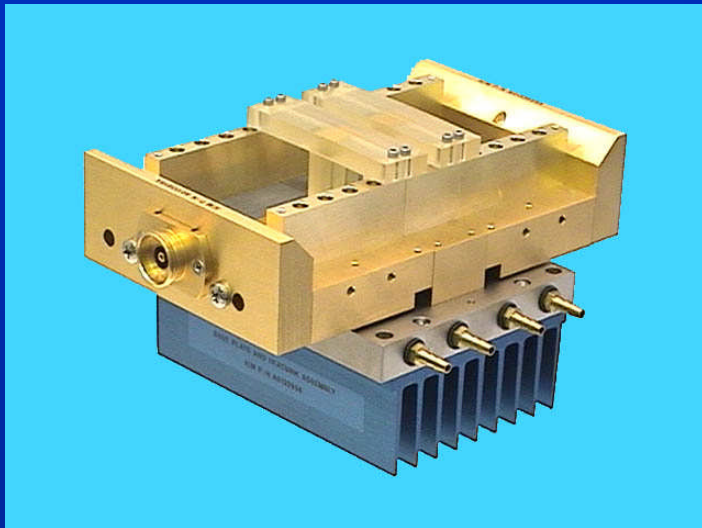




The World-Wide Authority in the Design & Manufacture of Microwave Test Fixtures

HighPower Transistor TestFixtures

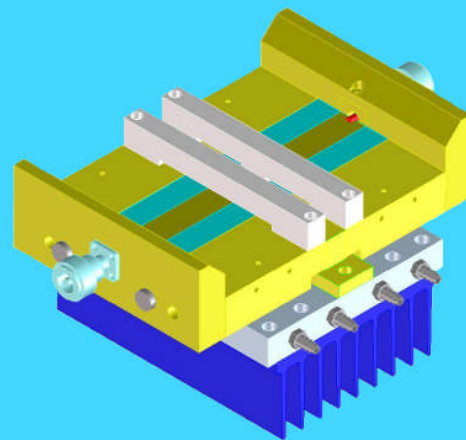
High Power Transistor Test Fixtures



High Power Transistor
Test Fixture

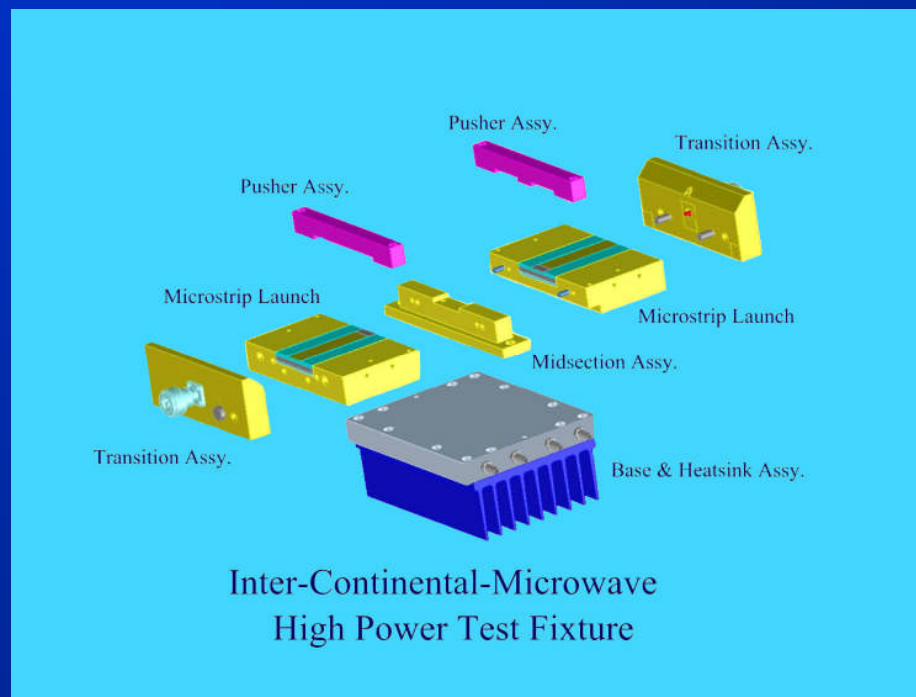
- High Power Transistors
 - ICM offers Microstrip and Stripline High Power Fixtures
 - Select from APC-7, 7/16" (14 mm), APC-3.5mm, N, K and Super-SMA
 - Microstrip Launches to match the DUT input and output
 - 50 Ohm or pre-matched input and output circuits
 - Customer can design matching circuits to be incorporated
 - Air or liquid cooling
 - TRL-Calibration Standards for in-fixture calibration

HighPower TestFixture

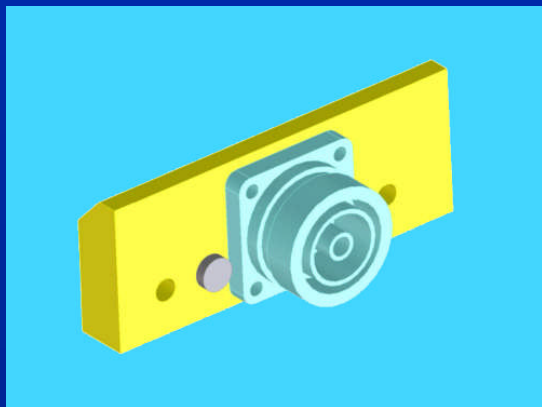
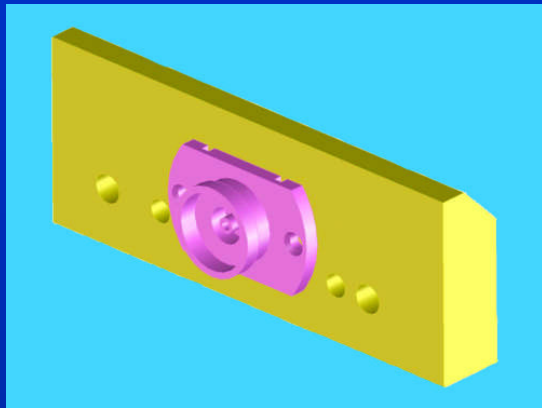


Inter-Continental Microwave
High Power Test Fixture

Exploded View of High Power Test Fixture

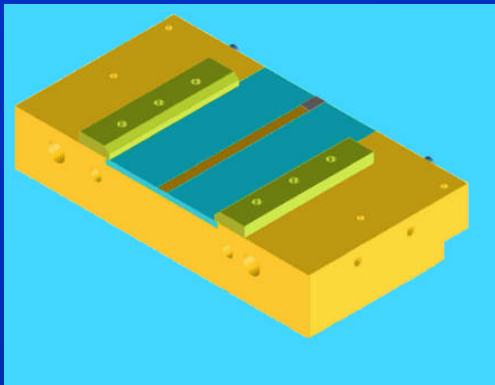


Transition Assemblies and Connector Options

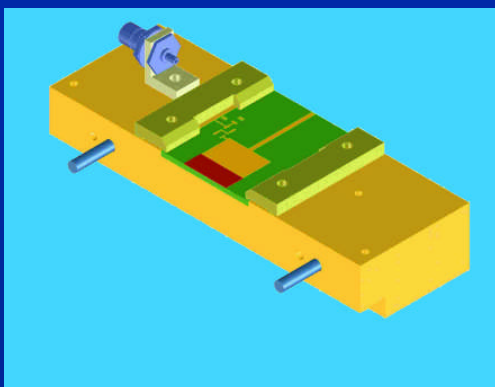


- High Power Transition Assemblies
 - Available Connectors
 - APC-7 mm
 - APC-3.5 mm
 - 7/16" (14mm) – Connectors
 - N (f) Connectors
 - K (f) Connectors
 - Super-SMA Connectors
 - Microstrip Interface
 - Multiple models available to interface with the Microstrip Width

Microstrip Input Launch Sections



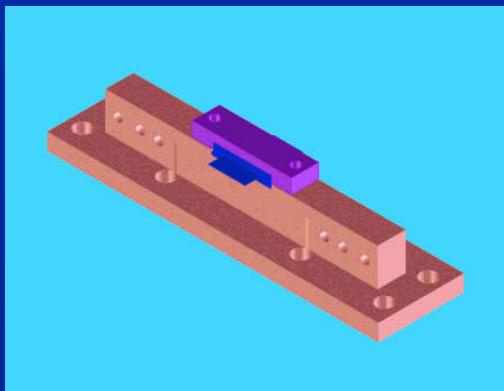
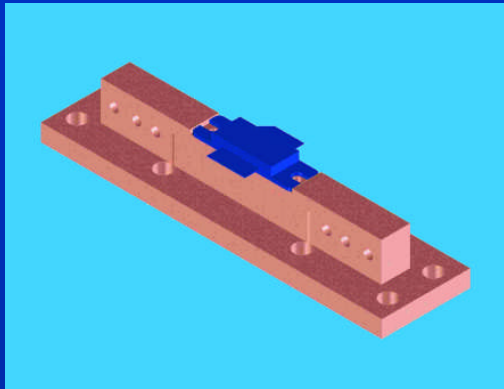
50 Ohm Microstrip Launch



Pre-matched Microstrip Launch

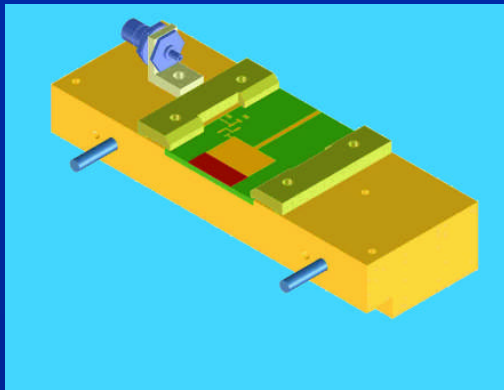
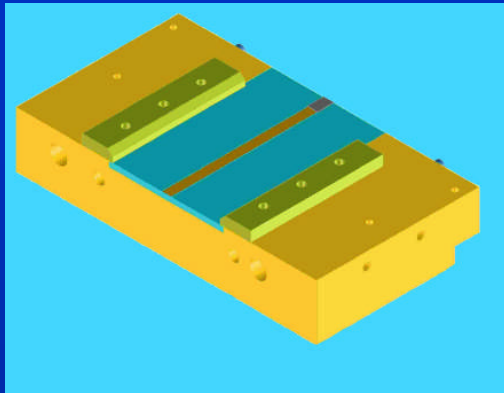
- Microstrip Input Launches
 - 50 Ohm Microstrip Input Launches
 - Microstrip Trace Width to match the DUT input lead
 - Material selected to realize the Microstrip Width and Frequency required
 - Pre-Matched Microstrip Input Launches
 - Microstrip Trace Width to match the DUT input lead
 - Material selected to realize the Microstrip Width, Impedance and Frequency range
 - Customer can design the pre-matching circuit

Midsection for High Power Test Fixtures



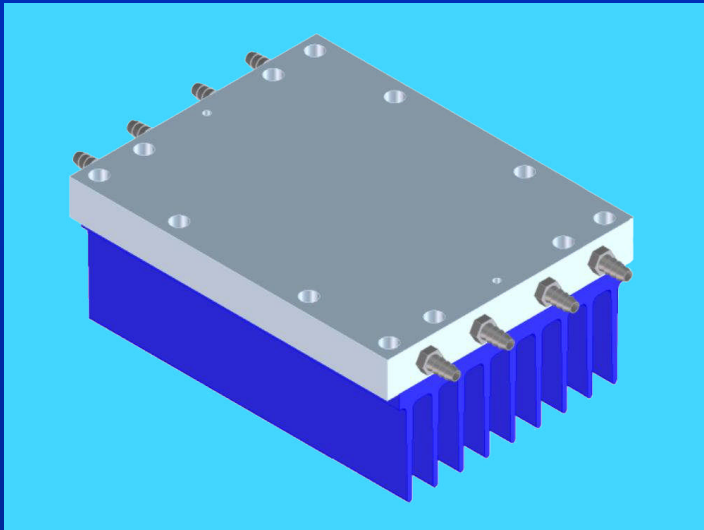
- Midsection Types
 - For DUTs with Flange
 - Screw down holes provided
 - Midsection must match the DUT Width
 - Midsection must match the DUT height between leads and bottom of Device
 - For DUTs without Flange
 - Screw down cover to hold DUT
 - Midsection must match the DUT Width
 - Midsection must match the DUT height between leads and bottom of Device

Microstrip Output Launch Section



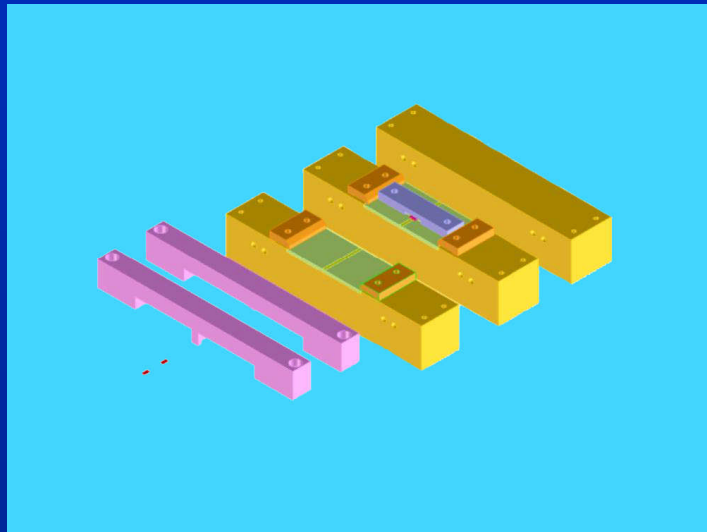
- Microstrip Output Launches
 - 50 Ohm Microstrip Output Launches
 - Same requirements as for Input Launches
 - Launch substrates field replaceable
 - DURA contacts for long life
 - Pre-Matched Microstrip Output Launches
 - Same requirements as for Input Launches
 - Launch substrates field replaceable
 - DURA contacts for long life
 - Bias circuits can be incorporated
 - Pre-matching circuits with different frequencies can be inter-changed

Basewith Heatsink



- High Power Test Fixture Cooling
 - Not required for low power device testing
 - DUT Midsection interfaces directly to Cooling Plate
 - 4 Channels in cooling plate for liquid cooling
 - The Cooling channels can be connected in series for medium heat or in parallel for high heat dissipation
 - Heatsink for convection cooling
 - Heatsink removable to mount cooling plate to external cooling system

HighPower TRLCalibration Kits




- TRL Fixture Calibration
 - In-Fixture Calibration allows de-embedding of the test fixture
 - 50 Ohm or lower impedance available
 - Standards guided by precision pins for easy insertion
 - Different Frequency ranges available
 - All Calibration Coefficients provided with Calibration Kit



The World-Wide Authority in the Design & Manufacture of Microwave Test Fixtures

- Where to get more information:
 - www.icmicrowave.com
 - Call Inter-Continental Microwave
 - Tel: (480) 940-0740, Fax: (480) 961-4754
 - E-mail: sales@icmicrowave.com

Customer Requirements Form

Inter-Continental microwave  The World Wide Authority in the Design and Manufacture of Microwave Test Fixtures and Automatic Device Handling Systems.

Customer Requirements Form

Customer Information: _____ Date _____

Contact Name _____

Company _____

MS/Division _____

Address _____

Phone number () _____ Fax number () _____

E-mail _____

RF Requirements:

	Typical Example	Your Requirement
Type (sex) of RF connectors required	(3.5mm (f))	_____
Frequency range	(DC – 18 GHz)	_____
Insertion loss (each transition)	(0.5 dB)	_____
Return loss (each transition)	(20 dB)	_____
Isolation	(30 dB)	_____
Number of RF ports	(2)	_____
Calibration required (e.g., TRL, TOSL, TRM, THRU)	(THRU)	_____
Type of test equipment	(HP 8510B)	_____
Fixture repeatability (with thru line)	(± 0.1 dB)	_____
Maximum RF power	(4 watts)	_____
Other RF characteristics that my affect test fixture design		_____

DC Supply Requirements:

	Typical Example	Your Requirement
Number of DC ports	(6)	_____
Maximum voltage (each port)	(15 V)	_____
Maximum current (each port)	(15 A)	_____
Preferred connector type	(9 pin submin.)	_____
Other DC supply characteristics that my affect test fixture design		_____

1515 Wyatt Drive, Santa Clara, CA 95054-1586
Tel: (408) 727-1598, Fax: (408) 727-0105, E-mail: sales@intermicrowave.com

B6107915A Page 1 of 2

- Customer Requirement Form (CRF)
 - Collects all the information from the customer
 - Specifies what the customer application is
 - A checklist for data needed to make the best quote
 - Is a general form only and not all questions apply to every requirement
 - Requests additional drawings and information on DUT